

PERIOD HOMES

RENOVATION

INTERIORS

GARDENS

# CONSERVATION NEWS Kent

Summer 2015

Complimentary

French...  
*Inspired*

*Local Roofing*  
Regeneration

Contemporary & Traditional  
*Beds*

[www.cnkent.co.uk](http://www.cnkent.co.uk)

# Ashford & Cranbrook Roofing Partners

Heritage property specialists



From Full Renovations to Annual Maintenance

Kent Peg Tile specialists ♦ Leading the way in quality

Free no obligation quote ♦ Built on reputation

Tel: 01580 242925

[www.cranbrookroofing.co.uk](http://www.cranbrookroofing.co.uk)



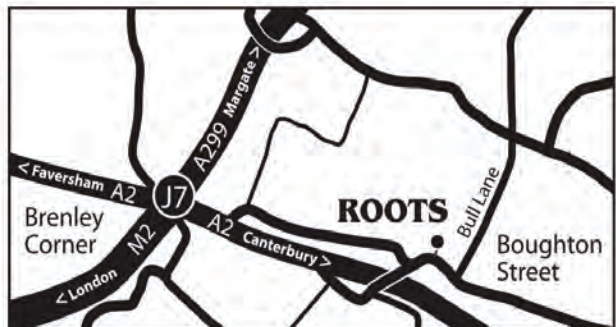


**Kitchens Bedrooms  
Bathrooms**

Roots is a **local family** run specialist that **design, supply and install** complete rooms. We take **responsibility** for the **whole project** ensuring your new room is a **pleasure** from the start.

Visit our large showroom in  
Boughton-under-Blean between  
Faversham and Canterbury

*Large showroom at:*  
Vine Farm, Stockers Hill  
Boughton-under-Blean  
Faversham  
Kent, ME13 9AB  
tel: 01227 751130  
[www.rkbb.co.uk](http://www.rkbb.co.uk)



**BRITAINS BEST  
COOKSHOP AWARD  
WINNERS 2015**



# Copperfields

OF WHITSTABLE

Cookshop, Homeware & Gifts Since 1956

Inspiration for your kitchen and home



shop@copperfieldsofwhitstable.co.uk • www.copperfieldsofwhitstable.co.uk  
Copperfields • 93 High Street • Whitstable • Kent • CT5 1AY • Tel: 01227 273519



# COPPERFIELD'S OF WHITSTABLE WIN "BRITAIN'S BEST COOKSHOP 2015"

Whitstable based independent Cookshop "Copperfields" were honoured at this year's Housewares Conference.



## Kim Foster MD of Copperfield's

said "We are really privileged and delighted to have received the prestigious Award of Britain's Best Cookshop. The Copperfield's Team have worked hard this year and to have been recognised in this way is a credit to all concerned. More importantly we thank our loyal customers, as without them we would not have a business or the Award. We would also like to thank all our suppliers who have supported us so well in the last year. We are now looking forward to 2015-2016 and Phase two of our development."

Open 7 days a week Copperfield's pride themselves in providing a friendly and fun environment to shop whilst providing wist cookware and a range of gifts ideal for the Home and Kitchen.

## Kim's Hot Pick

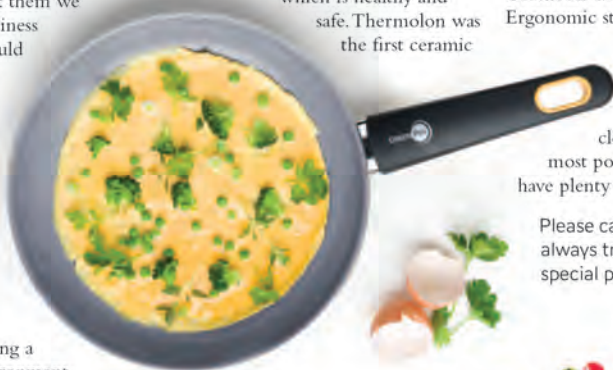
We asked Kim to give us his pick of the latest cookware available at Copperfields:

"One of our favourite cookware products is GreenPan and their Healthy Ceramic Non-stick range with GreenPan's Thermolon coating, which is healthy and safe. Thermolon was the first ceramic

GreenPan's Thermolon coating does not contain any toxic chemicals or persistent pollutants and if you accidentally overheat your pan, even up to 450°C no toxic fumes will be released and the coating itself will not blister or peel.

GreenPan Ceramic ranges come with Ergonomic stay-cool Bakelite handles, Thermolon healthy ceramic non-stick coating and a ceramic-coated exterior for easy cleaning. As one of our most popular ranges we always have plenty in stock."

Please call in and see us, we will always try and find that one special product for you.



non-stick coating used in cookware and is manufactured without PFOA and contains no lead or cadmium.



# Welcome



I find it hard to believe we have already had the longest day, although no real summer as yet, so to speak! Sunshine through to September is my idea of heaven, so fingers crossed.

A big thank you goes out to our advertisers for their input and contributions to the editorial content. It is always valuable to get the most comprehensive advice from the experts.

We were looking forward to seeing the completed renovation of "The Listed Gem" in this edition but we will have to wait for this one until the Autumn magazine, when all will be revealed.

Supporting local independent businesses is key to their continued growth, so please mention Conservation News Kent when responding to their advertisements.

Wishing you all a beautiful summer, see you in the Autumn!

Enjoy!!

*Dawn*



**Published by**  
Dawn Long  
Conservation News  
(Kent) Ltd

**Contributors**  
Jacksons Fencing  
Designer Bed Co.  
Tree Tek  
Ballman Roofing  
Signature Miramar  
Copperfields  
Salutation Gardens

**Editor/Sales Manager**  
Dawn Long  
07725732535  
dawn@cnkent.co.uk

**Designed By**  
Chris Whiting

**Contribution**  
David Wright

**Front Cover**  
Ochre & Ocre

Conservation News  
(Kent) Ltd 2015.  
All rights reserved.  
Reproduction of any part  
of this magazine is not  
permitted without written  
permission of the publisher.  
The publisher accepts no  
responsibility of any loss or  
damage in respect of any  
product or service that may  
be advertised or referred to  
in this issue. Printed in the  
UK by Newman Thomson.



# What's Inside

**08 Tree Tek**  
From little acorns...

**14 Jackons Fencing**  
Delightful garden retreat

**22 Ballman Roofing**  
Local regeneration projects

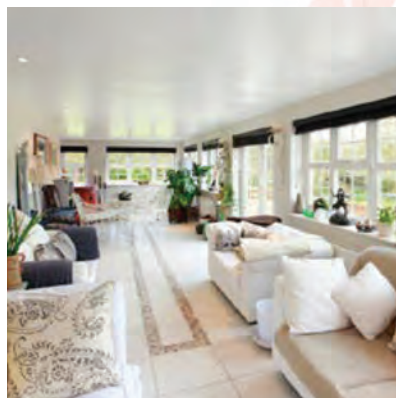
**28 Copperfields of Whitstable**  
Britains best cook shop 2015

**30 Designer Bed Co.**  
Sleeping soundly

**37 French**  
Feel inspired...

**44 Salutation Gardens**  
From floods to bloom

**50 Signature Miramar**  
Caring for the elderly





Based in Whitstable, Kent, tree-tek is a family run business of skilled & trained tree surgeons who put their success down to both hard work and being able to tackle the most difficult arboricultural tasks.

Established by Carl Stedman who has more than a decade of experience in the industry, tree-tek is a local, independent company specialising in high quality tree care.

Asked what he puts the company success down to, Carl said "At tree-tek we believe this is due to many factors but four key points stand out to me:

- (1) focusing just on arboricultural work & not diversifying
- (2) our experienced, close knit team ensures that we work together as a safe, well managed unit
- (3) the pride we take in our work, and finally
- (4) the group skill set we provide from tree felling to stump grinding allows us to complete all jobs so that the customer gets a "one-stop tree surgeon shop"!

Carl adds "We are experienced in many different areas and this enables us to carry out both large commercial projects as well as residential work".

## From Little Acorns..... Local Tree Firm Success is on the Up and Up!

"Our portfolio includes large contracts with local schools, councils and organisations as well as smaller residential work. We are just as happy working on a small local job as a large industrial contract, and that has helped us stay busy".

The company says success is due to:

### 1- Making it easy for the customer

The company likes to make it as easy as possible for the customer and in order to do this several important points are taken care of:

Firstly they like to make it as easy as possible so all the preparatory work is taken care of for them. This includes liaising with the authorities where necessary, compiling the risk assessments and notices, erecting the correct signage and warning notices and finally, after the







work is completed, removing the debris from the site.

The firm knows that taking the hassle away from the customer by dealing with difficult arboricultural issues is paramount, as customers don't want the aggravation. For example, felling dangerous trees that are posing a risk to the public or to property might require tree-tek liaising with the Police, Local Council or Highways or all three. Or, working in Conservation areas which requires thorough consultation and approvals prior to any works commencing is all taken care of.

## 2- Having a large scope of works

In terms of the scope of works tree-tek services include sectional felling and dis-mantling of trees, crown reductions, crown thinning, crown lifting, hedge trimming and stump grinding to name but a few.

As the arboricultural industry involves work that has the potential to cause serious damage, you need an operator that is both certified to work on that particular aspect and who is also experienced in that specific field. If, for example, it's a complete dismantling and felling job or perhaps a crown reduction, the trees invariably need the installation of intricate rope and pulley systems that ensures that every branch is lowered safely to its designated area. The climbing and setting up of such systems is not a such a common skill-set

across the industry as one may think and so tree-tek are regularly subcontracted out to other companies who need this knowledge and experience.

## 3- Being able to get to the job!

Access is always something that can halt a job. If your property has difficult access, tree-tek is equipped with 4x4 vehicles that can deal with the toughest terrain so this is not an issue. Also, the company chippers and tipper trucks enable them to take all the customer waste away so that the job site is left as tidy as is practically possible.

## 4- Understanding what Conservation means

It is all very well discussing the cutting down of trees but it must be understood that tree-tek will never fell a tree without the correct procedures being followed.



The company understands that continued urbanization has resulted in us all coming into closer contact with trees and so demands to cut these down are growing.

It must be said that the company will not fell any healthy tree unless it is absolutely necessary and tree-tek sides with the preservation of them.



#### 5- Keeping up to Date

The company aim is to always stay at the cutting edge of the industry, whether it be advances in new technology using the most current equipment to make their lives safer and easier, or keeping up to date with the latest tree health issues. To that effect they strive to keep up to date with all associated regulatory changes and improvements. This includes seminars, training courses, and exhibition demonstrations.

#### 6- Being serious about Health & Safety

Above all things the company takes safety very seriously, after all they work in a dangerous industry so they ensure their staff are First aid trained and fully qualified to NPTC standards to carry out any task that they are assigned to do.

#### 7- Having the correct level of Insurance

The company says the most common

question asked of them is 'are you insured?' to which they always answer 'YES OF COURSE! The aim is to give the customer complete peace of mind so tree-tek are fully insured holding both full Public Liability and Employers Liability Insurance leaving the customer rest assured that the job is always in safe hands.

#### 8- Being On Call 24/7

tree-tek offer a 24 hour emergency call out service. As you can imagine this can be invaluable – (the storms in December 2013 resulted in long days and nights clearing fallen trees!).

#### 9- Giving Free Quotes!

For a **FREE**, no obligation friendly quotation call tree-tek today!

Note: The company know that an answerphone is not what you want when you call and so they now have a permanent office manager. So hopefully, (unless she is already on the phone), you should always be speaking to a real person when you call!



[www.tree-tek.co.uk](http://www.tree-tek.co.uk)

01227 637590

07860 897037







Triple Gold Award Winners SPATA 2015  
SPATA Pool Contractor of the Year 2015

**XL Pools Ltd, The Parlour, Saracens  
Dairy, Pluckley Road, Pluckley, TN27 0SA**

Telephone: 0845 20 60 420

Email: [enquiries@xlpools.com](mailto:enquiries@xlpools.com)



**XL POOLS**

[WWW.XLPOOLS.COM](http://WWW.XLPOOLS.COM)

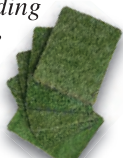
# Artificial Lawn CENTRE



Tel - 01634 720411



- Looks great all season
- No more muddy feet or paws
- No watering or feeding
- High UV resistance
- No more mowing
- Children friendly
- Pet friendly



Unit 8 Ballard Business Park  
Cuxton Road, Strood  
Kent, ME2 2NY  
[www.artificiallawncentre.co.uk](http://www.artificiallawncentre.co.uk)

Open: Mon-Fri 8am-5pm, Sat 9am-1pm

## ABLE LANDSCAPES

Able Landscapes is a company that is renowned for its high quality of work from quotation through to completion and prides itself in its attention to detail and customer service

We specialise in design and installation & are happy to be able to offer the following services:

### COMPLETE GARDEN DESIGN

Patios & Decking, Gazebos & Water Features, Turfing, Fencing

### GROUNDWORK

Footings, Oversights, Extensions

### GENERAL GARDEN MAINTENANCE

Hedge Trimming,  
Tree Pruning & Topping, Lawn Mowing,  
Garden Clearance



Contact us: Tel: 01795 536809  
Fax: 01795 536809  
Mobile: 07759 546838

Email: [ablelandscapes@btinternet.com](mailto:ablelandscapes@btinternet.com) Web: [www.ablelandscapes.com](http://www.ablelandscapes.com)





# COME AND VISIT EXOTIC PALMS AND SPAS showroom



Entrepreneur Chris Whitton, managing director of Exotic Palms and Spas based in Gillingham, would like to invite you to visit our showroom to find out about Beachcomber hot tubs. For fifteen years we have been a premier dealer for Beachcomber hot tubs and are now the **UK Number 1 dealer** for these products

which have been hand made in Vancouver, Canada, since 1978. All the models are hydro-therapeutically designed and we invite you to discover our experience of how your life may be changed to leave you feeling relaxed and rejuvenated.

We have fourteen different Beachcomber models to offer you: all come with underwater mood lighting, many with top lighting and back-lit waterfall, and eleven additionally with reflex foot-massage facilities. The top range boast iPod docking station, suitable for iPhone 5 and 6, with wireless controls to select your music on the top side. Each Beachcomber hot tub is hand-crafted and comes with a 30-year lifetime guarantee on its construction.

According to the Californian energy commission who carried out a study of all hot tub manufactures for energy consumption and efficiency, Beachcomber came out in front by 57%, making them inexpensive to run at around 54p a day. We offer complete water-treatment training, the writing up of a three-month daily diary for every client, and provide professional cleaning and servicing on a regular basis. So why not give me a ring to arrange a viewing, and I will leave you my personal mobile number for direct contact – **07831 840606**. We look forward to seeing you.



## Exotic Palms and Spas Ltd

A Beachcomber Hot Tub is a  
breath of fresh air in your life

## HOT TUBS

Feeling stressed ? Then  
Soak and relax in a  
Beachcomber Hot Tub



Professional advice • Full range of water treatments •  
Professional cleaning service/maintenance • 30 years  
guarantee on construction of tub • An original  
award-winning premiere dealer



# Soak • Enjoy • Relax

Unit C • Chalmers Way • Invicta Business Centre • Gillingham • Kent • ME8 6PF  
01634 238700 • 07831 840606 • [www.exoticpalmsandspas.co.uk](http://www.exoticpalmsandspas.co.uk)

For a limited period only, Free delivery  
and installation. Call today for details.



# Jacksons Fencing

NEWS, TOPICAL TREATS & MORE...

**Here's a simple shelter that makes a delightful 'retreat' in any garden...**

**A**fter showing you some of our very lovely customer projects over the last few months, to help inspire you with your own garden projects, I thought it

was high time I showed you something tempting from the Jacksons range. Something suitably summery, that may capture your imagination and make you

keen to have something like it in your own outdoor space.

I think this may be it; we created the Retreat shelter a couple of years ago, it was inspired by a structure in one of our Jacksons show gardens (The Sanctuary Garden by Joanne Winn). It was a simple garden shelter with a back, one side and a roof, that had the option of having a polycarbonate covering to make it a bit more shower-proof – pretty handy with our typical British summers. One of the bonuses with this standard, single unit Retreat, is the size; it's not massive with a modest footprint of roughly 3.3m



Jacksons Woven Retreat garden shelter





Jacksons guarantees all its timber products for 25 years. So when you see this badge, you are guaranteed the highest quality, great British design, a seamless installation by our team of specialists and most of all, peace of mind.




**We call it our badge of quality...**

Call **0800 41 43 43** for a copy of our brochures or to buy online visit **[jacksons-fencing.co.uk](http://jacksons-fencing.co.uk)**

 [facebook.com/JacksonsFencing](https://facebook.com/JacksonsFencing)

 [pinterest.com/Jacksonsfencing](https://pinterest.com/Jacksonsfencing)

 [@JacksonsFencing](https://twitter.com/JacksonsFencing)

670 Jacksons Fencing Head Office  
Stowting Common Ashford  
Kent TN25 6BN Tel 01233 750 393

**Jacksons**  
Guaranteed Quality since 1947



wide by 1.9m, but as you can see that's plenty big enough to accommodate a four piece garden seating set, including a table. So it's the sort of size that can nestle easily into a corner of a small courtyard or garden. However if you wanted to be more ambitious you can

add to this standard Retreat by adding panels or doubling depth etc. so if you wanted something bigger have a chat to Jackson's sales team. The original Retreat was designed with Venetian panels (simple horizontal slats) which looked great, this new version Retreat has our





new Woven panels which I think looks even better and creates wonderful light and shade effects when the sun shines through the panels.

[www.jacksons-fencing.co.uk/ashfordlocal](http://www.jacksons-fencing.co.uk/ashfordlocal) or call 0800 408 4754 to talk to your local Jacksons Fencing Centre.

*[louise@jacksons-fencing.co.uk](mailto:louise@jacksons-fencing.co.uk)*



Win  
£300  
of  
Jacksons  
vouchers...

To enter the free prize draw and be in with a chance to win £300 of Jacksons vouchers simply log on to your dedicated page, address below and follow the easy instructions on how to enter.

The draw closes 31.08.15.

To enter go to:

**[www.jacksons-fencing.co.uk/ashfordlocal](http://www.jacksons-fencing.co.uk/ashfordlocal)**



# EVERGREEN LANDSCAPING

## ALL ASPECTS OF LANDSCAPING WORK UNDERTAKEN

DECKING, PATIOS, FENCING,  
BLOCK PAVING, BRICK AND STONE  
WORK, PONDS AND PLANTING ALL  
FINISHED TO A HIGH STANDARD AT  
COMPETITIVE RATES

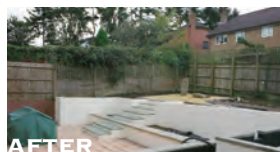
BEFORE



AFTER



BEFORE



AFTER

PHONE LEE ON 07799 103112 / 01227 264482

FREE QUOTATIONS ON REQUEST OR VISIT

[WWW.EVERGREENGARDENSKENT.CO.UK](http://WWW.EVERGREENGARDENSKENT.CO.UK)

## DRIVEWAYS & PATIOS LTD



BLOCK PAVING • DRIVEWAYS • DECKING • FENCING  
PATIOS • TURFING • GARDEN CLEARANCE  
BUILDING & MAINTENANCE WORK

## LANDSCAPING SPECIALISTS

# 01227 749872 | 07770 964939

[www.drivewayexperts.co.uk](http://www.drivewayexperts.co.uk)



Barcelona  
Rattan Weave  
garden sofa set



£299



Florida Bisto Set  
£199



Lounger Companion Set

£239



4 - 8 Seater  
Cube Set

£549



Brighton Dining  
Corner Group

£895



[Garden-Furniture-Store.co.uk](http://Garden-Furniture-Store.co.uk)

Quality garden furniture since 1997

Joseph Wilson Industrial Estate  
Whitstable  
Kent  
CT5 3PS



**tree-tek**   
professional tree surgery & tree management



**Call us now for a FREE Quotation**

NPTC City & Guilds qualified – Fully insured

**t: 01227 637590 m: 07860 897037**

[www.tree-tek.co.uk](http://www.tree-tek.co.uk) [info@tree-tek.co.uk](mailto:info@tree-tek.co.uk)

**John Hunt**  
**GROUNDWORKS & BUILDING**

*... over 38 years experience*

**Traditional block paved & cobblestone drives or pathways for listed and period homes**

- Paths
- Patios
- Drainage
- Fish Ponds
- Hardstanding
- Bases •
- Drives •
- Extensions •
- Plans Drawn •
- Complete Builds •

*Plans drawn and submitted to Council for approval*

**Office: 01227 277214**

**Mobile: 07894 542524**

Bespoke Design, Supply, Installation, Servicing and Repair of All

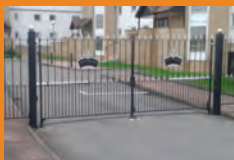
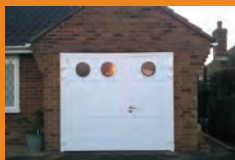
**DOMESTIC, COMMERCIAL, INDUSTRIAL**

**AUTOMATIC GATES, GARAGE DOORS, SHUTTERS, BARRIERS, ALUMINIUM, WOODEN, STEEL AND PLASTIC**

to your requirements – throughout Sussex, Kent, Surrey and the Home Counties.

**The Professional Company with 25 Years of Experience and Reliability.**

**• NO ROT • NO RUST • NO FADE • LOW MAINTENANCE • 10 YEAR GUARANTEE •**



**• MATCHING FENCING ALSO AVAILABLE • MANY MORE DESIGNS AND COLOURS •**

**TEL: 01323 460064**

Call now to discuss or email [steve@ogduk.com](mailto:steve@ogduk.com)

**UNSURE IF YOUR GATES ARE SAFE TO USE?**

Gate safety is now a priority, advice freely given

**[www.ogduk.com](http://www.ogduk.com)**



# MBS Herne Bay Canterbury & Gillingham



*Beautiful Garden Landscaping  
products available at*



[www.mitchambuildingsupplies.co.uk](http://www.mitchambuildingsupplies.co.uk)

Hearne Bay  
01227 366633

Canterbury  
01227 455564

Gillingham  
01634 232491

# Ballman Roofing

*Part of local historical regeneration projects in  
Canterbury, Whitstable and Herne Bay*

Ballman Roofing has had an interesting 10 months. Canterbury City Council has engaged us on a variety of regeneration projects, involving a diverse range of expertise, to restore and improve the historic buildings in its care. The projects we are delighted to be involved in:

- Whitstable Castle
- Herne Bay Clock tower
- Herne Bay Museum
- The King's Hall
- Tower House
- The Guildhall

**Tower House** in Canterbury – the former Lord Mayor's office in the Westgate Gardens. Grade II Listed.

The Council allocated £646,000 on improving the usability of Tower House. It is now available for private hire, such as weddings, family and community events, and the Council themselves use

it for civic events of their own.

It was a major project involving restoration inside and out, and improvements for the 21st century, including:

- a lift
- baby-changing areas
- accessible toilets
- lighting

Ballman Roofing were charged with the following works:

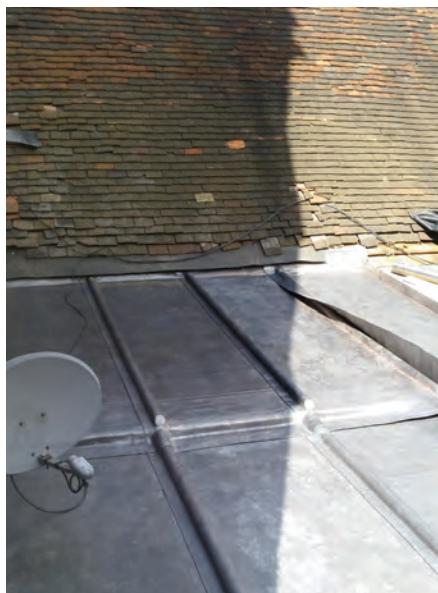
- Removing old lead
- Insulating the roof on top of the stonemasonry with high density insulation boards
- Installing new leadwork with t-prin welted joints, dressed mop rolls and welded corners
- The lead bays are laid and set out in accordance with Lead Sheet Association guidelines
  - With the use of dressed lead wood

core roll details for expansion, this will give an attractive and traditional finish.

We are passionate about our attention to detail and this project allowed us to execute our traditional leadworking skills.







Across the way at **The Guildhall** in Canterbury we're awarded a larger project. This time, we renewed the totality of the coverings to this beautiful former church (Holy Cross) which has its origins in the 1380s. The church commissioners declared the church redundant in 1972 and donated the building to the citizens of Canterbury.



After refurbishment in 1978, Holy Cross became Canterbury's Guildhall and was officially opened by Prince Charles, the Prince of Wales. This building is a Council Chamber and commonly

used for Meetings. This year, it served as a Polling Station for the local and general elections.



Ballman

Roofing Contractors are leadwork specialists and have a team of highly skilled leadworkers who install all forms of leadwork, in accordance with the Lead Sheet Association guidelines. Ballman include leadworking with pitched roofing, tiling and slating, so we can execute an entire project with accuracy, continuity, organisation and dedication from start to finish

**Whitstable Castle** – aka Tankerton Towers.

This beautifully detailed building, and grounds started life as a residence for the Pearson Family in the late 18th century. Thereafter it was home to various local merchants and dignitaries. It has recently undergone a major

restoration project directed and funded by Canterbury City Council, the Lottery, and others.

It is a very special and unique venue for hire – there are regular antiques and collectors' fairs, evening classes, outdoor theatre events in the grounds, and it is open daily for coffee and tea in the

orangery – perfect for families with lots of outside space and a well kitted-out play area. If you climb up the internal staircase a door leads out onto a small roof area giving a unique perspective of





the coastline. We were delighted to be part of this project.

The works included encapsulation of some of the castle's crenellations with lead cappings dressed, welded, welted and clipped, in order to allow for the expansion of the lead, protect the delicate stone and, most importantly, protect the visual aesthetics of the castle, whilst keeping the water away.

**Herne Bay Clocktower** - They say that the 76-year old, Grade II Listed Herne Bay Clock Tower is the oldest freestanding, purpose-built clocktower in the world.

At 82ft tall and having been exposed to the harsh marine elements, this traditional structure had started to erode and deteriorate, so the Heritage Lottery Fund and Canterbury City Council funded a complete restoration of the Tower, to hopefully keep it in Herne Bay for a good few more decades.

Ballman Roofing is based in Herne Bay and this monument is a major part of our home town's heritage, so, naturally, it was a project close to our hearts.

The works involved replenishing the existing asphalt coverings to the tower steps and bell tower surface. Working through the bad winter weather, we upgraded

the asphalt with a more modern and high-performance reinforced plastic membrane called Sikalastic 618. This will provide a longlasting, waterproof roof area, as well as protecting the substrate beneath. It is an ideal solution for a location like this, due to its hard wearing flexible properties in a situation where weather conditions can become very harsh.

This project is complete, with works having been undertaken by various specialist trades from stonemasons, engineers, clock restorers and pest controllers – we think the results speak for themselves.

### **Herne Bay Museum & Gallery**

Established in 1932 and a popular local amenity and tourist attraction, exhibiting local paintings, prints and photos, as well as a Barnes Wallis Bouncing Bomb prototype from WWII.

Again, situated in our home town, we were very happy to be part of this project, which, for us, entailed recovering a large flat roof area, using our polyurethane-based seamless membrane system, Sikalastic 618 - a 25 year guaranteed maintenance-free system. We have used this application widely on commercial, industrial and residential properties, which is broadly accepted as an alternative to lead coverings in Conservation Areas. The anthracite grey colour has the aesthetic





appearance of lead and we have the ability to detail a roof in Sikalastic, for instance, incorporating lead rolls and flashings.

**The King's Hall** was another flat-roofing contract we undertook for Canterbury City Council.

The King's Hall was experiencing rainwater ingress and those of you who are familiar with the building will know the large flat roof area which sits at pavement height along Beacon Hill. It was our job to patch-repair the defective asphalt areas, in particular around the penetrations, such as the hand railing. We used our superior product Sikalastic 618 once again for this and since the works, we have not received reports of ongoing ingress, despite the delayed April showers this year!

We are very happy to have forged such a strong and good relationship with Canterbury City Council which has given us access to some of the most interesting buildings in the locality, and at the same time we feel we are giving something back to the community by using our expertise to undertake refurbishment and repairs to ensure that these buildings remain in public service for the next generation.

Ballman undertake new and replacement roofing services all year round for domestic and commercial roofing projects: repairs, quality new-build roofs and re-roofs, leadwork,

chimney repairs, flat roofs, rooflights, sun tunnels, fascia, soffit and guttering installations. We have all the traditional skills and expertise for treatment to both listed property as well as that in Conservation Areas.

Ballman prides itself on industry knowledge and maintaining a reliable, honest approach, working with integrity and achieving a level of customer service and craftsmanship. We do not cut corners or compromise on quality or the safety of our team of skilled workers. Every job is treated with the utmost importance.



**For further details  
of our services and  
products available:**

**Office: 01227 74 10 94  
Mobile: 07920 875 998**

Proud members of  
**Checkatrade.com**  
Where reputation matters



## Georgian Brickwork

Specialists in  
**Conservation & Heritage Brickwork**  
Skilful repairs to listed & period properties  
using  
traditional methods and materials  
Charles: 07732 975 349  
[www.georgianbrickwork.co.uk](http://www.georgianbrickwork.co.uk)

## WAREHAMS

Antique Garden Ornament Gustavian Furniture

68 Oxford Street - Whitstable CT5 1DG  
Mobile : 07831 210139  
[www.warehams.com](http://www.warehams.com)

# SurfaceTek

## 07479 604666

Reeves Yard, Warwick Road  
Whitstable CT5 1HX



**Surfacetek** offers  
**vapour blasting** with various  
types of media to meet  
our **customers requirements**.  
We work with **local builders**,  
**locksmiths** and **painters**  
to help them restore  
**architectural items** to  
their **original condition**.

Email  
[sales@Surfacetek.co.uk](mailto:sales@Surfacetek.co.uk)

FIND  
US ON  OR  
[www.Surfacetek.co.uk](http://www.Surfacetek.co.uk)

# WHITSTABLE STOVE SHOP



Multi-fuel stoves

(Supply only - or installed by HETAS licensed fitters\*)

Gas & solid fuel BBQs, wood fired pizza ovens

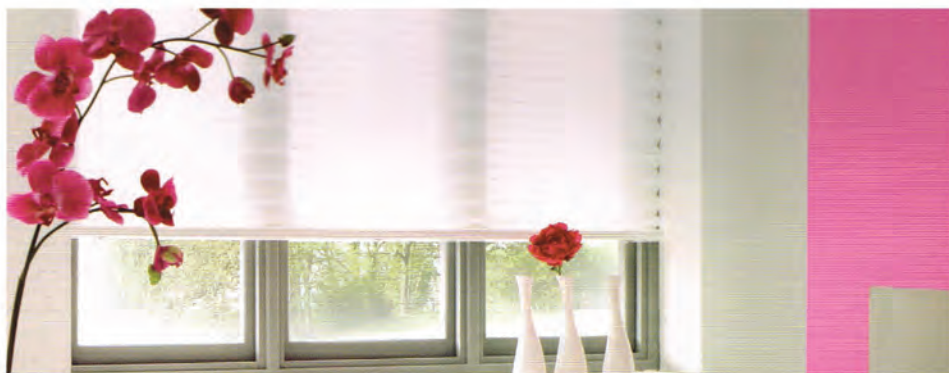
Primo ceramic BBQ grills, electronic firelighters

Far-Infrared panel heaters, chimeneas.....

2 Saddleton Road, CT5 4JB. 01227 266209

\*Plus stove servicing and  
maintenance by the same.





# CGS BLINDS & SHUTTERS

[www.cgsblinds.co.uk](http://www.cgsblinds.co.uk)



107A Tankerton Road, Whitstable, Kent. CT5 2AJ

**01227 278643**

Call in for a free no obligation quote.



Find us on  
**Facebook**



# Copperfields

## *Have won prestigious award*



The history of Copperfields dates back to the late 17th century when it was part of the adjoining 2 properties and known as The Queens Head Inn, a large beer house in private ownership. In history the first person listed is William Butcher in 1845.

There were stables to the rear and this may explain the other activities of the next licensees the Salters took over in

1855 listed as a coal merchant and 1858 licensed to supply horses to the postal service. In 1871 the premises were styled 'Queen Anne's Eating House'. Local Canterbury brewers Flint & Son leased the building but the changing nature of the High Street caused the beer house to closed in 1912. Since then has been a variety of independent family run businesses.





**Copperfield's of Whitstable have won the prestigious award of Britain's Best Cookshop 2015.**

Copperfields is a specialist Independent Cookshop and Homeware business based at 93 High Street Whitstable and has been established since 1956. The shop provides specialist items for your Home and Kitchen Including gifts, electrical appliances and cookware. Open 7 days a week we pride ourselves in providing a friendly and fun environment to shop whilst providing

specialist cookware and a range of gifts ideal for the Home and Kitchen.

The family business is operated by Kim Foster MD and his daughter Gemma who has been involved in retail for many years and has great interest in developing the business.

01227 273519

[www.copperfieldsofwhitstable.co.uk](http://www.copperfieldsofwhitstable.co.uk)



# Designer Bed Co.



As you step through the doors of Designer Bed Co., a high-end bed and mattress retailer in the heart of Canterbury, you are instantly met by the natural woodsy fragrance of Scandinavian pine. Elaborate Victorian-style metalwork and the sheen of gleaming

mahogany catch the eye as you explore the seemingly endless range of beds and mattresses on display.

Looking at the vast selection of bed styles and finishes, and listening to the quiet confidence of the well-trained, experienced staff as they advise



customers, it's hard to believe that this thriving retailer came from humble beginnings in a quiet seaside town in Kent. Even more surprising is how Designer Bed Co. managed to expand

its business in spite of the surge of online bed and mattress retailers that has pounced on the market over the last decade.

It was nearly 40 years ago that Designer Bed Co. was set up by Roy Sirett as a small retailer in the quaint coastal town of Herne Bay. The year was 1977, and Designer Bed Co. was entirely family-run, making a name for itself through exceptional customer service, competitive prices, and an A-to-Z delivery, assembly and disposal service. The family stayed

true to their mission of providing top-notch customer care and the best beds at the fairest prices, and as the decades marched on, their business grew steadily.

Then the Internet Boom struck in the late 1990s and, by the early 2000s, online bed and mattress retailers had mushroomed across the web; modern technology had drastically upped the ante in the retail industry, and as owner David Weston—son-in-law of founder Roy Sirett—admits, “Competition was fierce.” However, what helped Designer Bed Co. maintain its foothold in the local market are the same elements that set it apart 38 years ago: unrivalled customer service, a comprehensive delivery service, and unbeatable prices.

In fact, not being an online retailer has actually benefited Designer Bed Co.'s growth. A bed is not just an appliance or technological gadget; it's what you need to make sure your body and mind are rejuvenated every night. The right bed





can make the difference between a good night's sleep and not sleeping a wink—and customers know this, and appreciate being able to touch and try out the beds in store, rather than relying on a website photo. Even more importantly, Weston points out, “We don’t sell, we advise.” Every staff member has an expert understanding of how certain mattresses and beds can address different back problems or sleep-related issues, giving customers that added expertise and personal touch that online retailers simply cannot provide.

Now, as Designer Bed Co. approaches its fortieth year in business, the future

remains bright. Having weathered the storm of online retailers using the right ingredients of first-class service, quality, and fair pricing, there’s not much that can shake the longevity of this company as one of the most reputable bed and mattress retailers in Southern England.

27 Maynard Road, Wincheap Estate,  
Canterbury, Kent CT1 3RH  
01227 479446

**DESIGNER BED CO.**  
— CANTERBURY —



# DESIGNER BED CO.

## CANTERBURY

*Family owned specialist Bed & Mattress store now in our 38th year*



**Visit our showroom & discover our  
exciting display of traditional &  
contemporary bedsteads**

**27 Maynard Road, Wincheap Estate, Canterbury, Kent CT1 3RH**

**Tel/Fax: 01227 479446**

**Website: [www.designerbedsltd.co.uk](http://www.designerbedsltd.co.uk)**

**Email: [designerbedsenquiries@live.co.uk](mailto:designerbedsenquiries@live.co.uk)**



[www.allbits.co.uk](http://www.allbits.co.uk)

Supplying you with massive savings  
throughout Kent and beyond

Our large Bathroom Showroom has many  
different styles and ideas on display, for you  
to feel, touch and experience the quality for  
yourselves.

At our trade counter, we offer a friendly helpful  
service and stock many of your Plumbing  
essentials.



Unit 60 John Wilson Business Park,  
Whitstable, Kent CT5 3QT  
[allbitswhitstable@yahoo.co.uk](mailto:allbitswhitstable@yahoo.co.uk)

01227 281648

## ORMISTONS

GRANITE AND MARBLE SPECIALIST SINCE 1957

GRANITE - MARBLE - QUARTZ - BASALT - SLATE - LIMESTONE



### KITCHEN WORKTOPS SPECIALIST STONEMARK HEARTHES & FIREPLACES

We source our granite and marble from  
all over the world, offering many of the  
finest and rarest granites and marbles.  
We offer a full service from template to fit  
within five working days, (subject to  
pre-booking and delivery times)

We also supply stone for shop  
fitting, restaurants & pubs, hotels,  
public buildings and private homes.

### Visit our Showroom

Open Mon to Fri 8:30am to 5pm  
(Saturdays by appointment)

Unit 19 Lamberhurst Farm Dargate ME13 9EP  
[sales@cjormiston.co.uk](mailto:sales@cjormiston.co.uk) [www.cjormiston.co.uk](http://www.cjormiston.co.uk)



# Ed Parry

## Plumbing & Heating

**Installation, Servicing & Repair**

- **Boilers**
- **Central Heating**
- **Power Flushing**
- **Cookers**
- **Bathrooms**
- **Showers**



**Landlord gas safety certificates**

**01227 266236 • 07976 925224**  
**ed.parry@me.com**  
**www.edparryplumbingandheating.co.uk**



**CG Nation LTD**



Quality decorating  
and renovation

Our work is  
all around you

Excellent references  
always available

**With 20 years experience in maintenance,  
project managing, design and planning  
We have gained a niche set of skills in  
all aspects of property maintenance,  
improvements and design ideas**

Call Chris Nation on: **07971 415058**

Email: **chris@cgnation.co.uk**



APPLEBY GRANGE  
KITCHENS



**bespoke, hand  
painted kitchens**

- ❖ design
- ❖ build
- ❖ refurbishment

Based in Canterbury,  
Appleby Grange offer  
a unique kitchen design  
& build service.

**applebygrangekitchens.co.uk**  
**07779 809 229**

# Great labels from across Europe!

Emily Bond, The New Eden,  
Libra, St.Eval Candle Company,  
Voyage Maison, Bradley,  
Branche d'Olive, Bomo Art,  
La Rochère, Hanjel Mobilier  
& many more!

**french**...  
**inspired interiors**

67-69 Oxford Street,  
Whitstable, Kent, CT5 1DA

01227 634138

shop@frenchwhitstable.co.uk

www.frenchwhitstable.co.uk

@french\_suze



## Listed & Period Property Specialist

- ◆ Bespoke Kitchens ◆ Windows & Doors ◆ Staircases
- Garage Doors ◆ Timber Renovations & Repairs

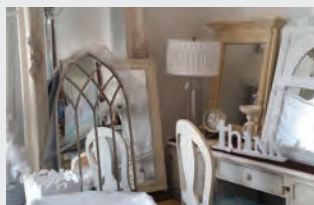
For bespoke joinery services  
in Kent, get in touch with  
Artisan Kitchens & Joinery  
today. We offer a personal,  
professional service and a  
free no obligation quote



01303 230027 or 07706 095354

www.artisankitchenandjoinery.com

# Old English Pine



If you are looking for stunning antiques, reproduction or french style furniture in Kent look no further than us!



The store is spread over 3 floors and has a  
huge stock of antique pine, oak and french  
style painted furniture and beautiful,  
reasonably priced accessories to make  
your house a home.

Bespoke pine units made to order.  
Open 7 days a week.

**Tel: 01303 248560**

100/102 & 90, Sandgate High St, Sandgate,  
Folkstone CT20 3BY  
oldenglishpineinkent.co.uk







# French Inspired interiors...

**N**ow supply many key materials for all your redecorating, re-upholstery and up-cycling needs. As well as our ever-increasing range of gifts, homeware and lighting with a French accent, we have a wide range of stunning, high-quality Scrapwood wallpaper by NLXL – I challenge you not to touch it just to make sure it really isn't used sea-washed groynes from Whitstable beach! It is also available in Concrete and Pressed Tin ranges, and is far less messy and cheaper than constructing a wall from wood or mixing the concrete yourself.

We also now have a three-hour course twice a month in the shop where you may customize a tea tray (cake, paint and aprons supplied) to teach yourself





how to apply our Grand Illusions vintage paint: you will be taken through the preparation, sealing, painting, distressing and finishing using our very high chalk content (46%) paint in a Scandinavian/French inspired palette of subtle and accent colours. These were specifically designed for the purpose by an antique furniture restorer in the 1980s and have recently appeared in *Elle Deco*, *Good Housekeeping*, *The Telegraph* and many other Interior magazines and press articles since their recent re-launch. The designer wanted to ensure that the finish was durable and stayed as you wished without chipping or staining from the previous finish bleeding through. We can demonstrate



a variety of techniques, dependent upon the required finish.

Our fabric range includes Ian Mankin's classic UK produced ticking, Linwood's subtle antique French prints, linens and feature wallpapers, and Emily Bond's beautifully drawn range of dogs, farmyard animals and vegetable print fabrics. We also stock some attractive French Basque-inspired striped cottons, and Voyage's wide range of printed linens and crewel-worked wools in neutral and vibrant watercolour-effect designs, whose many fabrics are suitable for bespoke lampshades. Margo Selby's kaleidoscopic range of stunning award-winning woven silks, cushions, wallpapers and scarves may also be seen.





Any required samples can always be quickly and easily obtained.

Our team comprises a highly talented (and local) maker of curtains, blinds and cushions, a re-upholsterer, and, our latest staff addition, a loose-cover maker. Bespoke upholstery in a wide variety of styles and fabrics may also be ordered.

We look forward to seeing you and discussing any requirements or hearing about new suggestions. The shop is open seven days a week and parking is always possible in side streets or at weekends in the charity car park at the nearby school.

Whitstable station car park is also available every day, with a bus stop opposite.

**french**   
inspired interiors

67-69 Oxford Street. Whitstable. CT5  
1DA. 01227 634138 / 07979811533  
shop@frenchwhitstable.co.uk  
www.frenchwhitstable.co.uk



@french\_suze

# The Painted Pearl

Vintage Modern Living

[www.thepaintedpearl.co.uk](http://www.thepaintedpearl.co.uk)

## Workshops

### Furniture Painting

#### Beginners Workshop includes:

- Preparation techniques
- Furniture painting principles
- Painting with Autentico chalk paint
- Two colour techniques
- Distressing and ageing
- Waxing with dark, black and white waxes

#### Advanced Workshop includes:

- Crackle glazing
- Craquelure glazing- Stencilling
- 3D stencilling with embossing paste
- Decoupage
- Image transfer

***All equipment and refreshments provided including a free vintage farm crate to practice on and take home - £65***

#### Furniture Painting Beginners

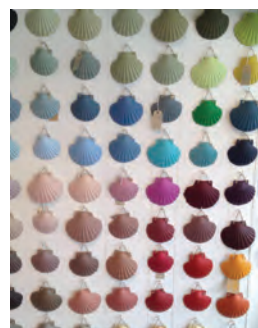
Thurs 16th Jul	6pm - 9pm
Sun 26th Jul	10am - 1pm
Mon 10th Aug	10am - 1pm
Mon 7th Sept	10am - 1pm
Mon 14th Sept	10am - 1pm
Mon 28th Sept	10am - 1pm

#### Furniture Painting Advanced

Mon 6th Jul	10am - 1pm
Mon 17th Aug	10am - 1pm

#### Lampshade Making

Mon 24th Aug	10am - 12pm
--------------	-------------



07879 060 616

The Painted Pearl, 115 Tankerton Road, Whitstable, Kent, CT5 2AN

# Anthony Swaine

## ARCHITECTURE LTD

Conservation • Design Consultancy • Listed Buildings  
Urban Design • Joinery Detailing • Traditional Shopfronts



Anthony Swaine Architecture Ltd.  
specialises in traditional & classical design;  
works to historic buildings; shop fronts and  
traditional joinery; timber framed buildings  
and urban design in the historic context

Do call our office for a free initial  
consultation and further information

The Bastion Tower,  
16 Pound Lane,  
Canterbury  
Kent CT1 2BZ

Tel: 01227 462 680  
mail@anthonyswaine.co.uk  
www.anthonyswaine.co.uk

Specialists in  
traditional lime mortars,  
gauged brickwork,  
stonemasonry and all  
associated crafts

Visit our website for full listings and current projects  
01622 859794 | [www.kcrltd.com](http://www.kcrltd.com) | 07831 236228  
email: [info@kcrltd.com](mailto:info@kcrltd.com)



**Kent Conservation & Restoration Ltd**  
Historic Building Craftsmen



## ANTHONY GRAY CLOCKS

*Since 1975, our team  
of skilled craftsmen  
has been restoring and  
conserving fine antique  
clocks and barometers for  
discerning collectors and  
members of the trade in  
several countries*

### Restoration Service

High Quality  
Watch Restoration

Wheel and Pinion Cutting

Dial Restoration

Clock Hand Making

Gliding - Engraving

Case Restoration

Valuations

Parsonage Farm, Marshborough,  
Kent CT13 0PG

07860 378122

[info@anthonygrayclocks.com](mailto:info@anthonygrayclocks.com)

**[www.anthonygrayclocks.com](http://www.anthonygrayclocks.com)**



Fast and  
Reliable Service

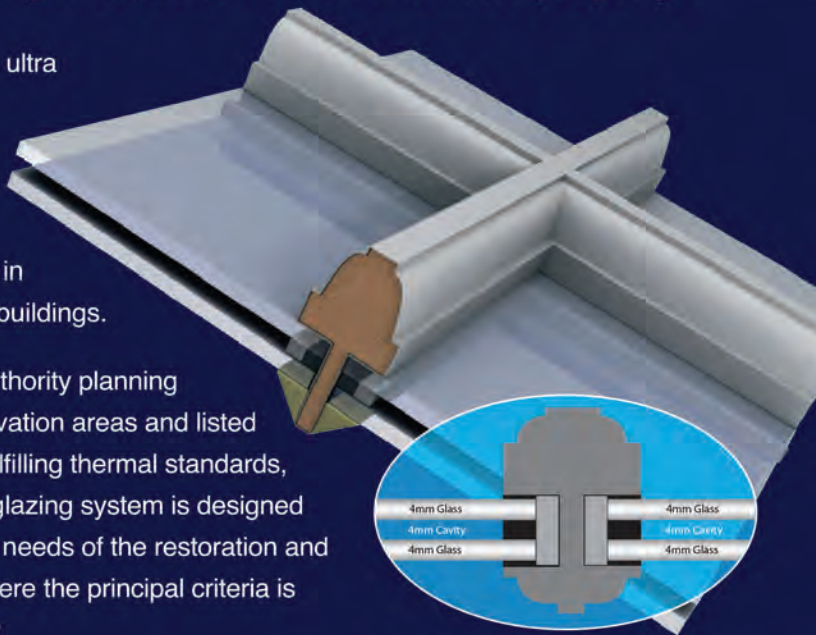
*Slenderline*<sup>®</sup>  
GLASS

## Sealed Unit Solutions for all Sash Windows

**Designed for period, conservation and listed property**

Slenderline Glass is an ultra modern solution to an age-old problem; high performance with outstanding aesthetics for windows in traditional and historic buildings.

Compliant with local authority planning permissions for conservation areas and listed properties as well as fulfilling thermal standards, this high performance glazing system is designed specifically to meet the needs of the restoration and replication sectors - where the principal criteria is authenticity and beauty.



### WHITE SPACER NOW AVAILABLE

The Warm Edge Spacer combined with the Krypton gas increases thermal efficiency of the glass, whilst the neutral appearance blends with any frame finish.

To accommodate a range of traditional rebates, Slenderline Glass is available with an overall unit thickness of 11mm or 12mm and a sightline dimension of 7mm.

**Call us now for a quote**  
**01732 885030**

[info@slenderlineglass.com](mailto:info@slenderlineglass.com)

[www.slenderlineglass.com](http://www.slenderlineglass.com)

Slenderline Glass Ltd, Unit 7 Bourne Enterprise Centre, Wrotham Road, Borough Green, Kent TN15 8DG

*Part of the EJ Cocker group*

## Traditionally built oak frame buildings



## Kent Oak Frames

[www.kentoakframes.co.uk](http://www.kentoakframes.co.uk) • [kentoakframes@gmail.com](mailto:kentoakframes@gmail.com)

Steve: 07748 835554 Kingsley: 07970 005778

Workshop: 01233 822186



Coles Yard, Ashford Rd, Bethersden, Kent

Kent Peg Tiling &  
Listed Building Specialists  
conservation and renovation  
specialists & high quality work  
by experienced craftsman



Roofing Contractors

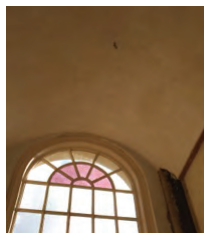


01797 270268 or visit [www.kentpegs.com](http://www.kentpegs.com)

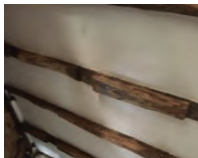


'Winner of N.F.R.C.  
Heritage Award 2011'

## SJ Milward Plastering Contractor



- ◆ Traditional & Modern Methods
- ◆ Interior & Exterior
- ◆ Lime & Hair Work
- ◆ Restoration & Conservation
- ◆ Listed Buildings & Period Properties
- ◆ FREE Quotation



ESTABLISHED  
SINCE 1976

01227 281242 / 07721 054949

[sjmilward@hotmail.com](mailto:sjmilward@hotmail.com)





# THE Salutation Gardens

**H**iding behind the ancient city walls of Sandwich lie 3.5 acres of Jekyll-inspired gardens that have defied years of neglect and catastrophic flooding to bloom into one of the most beautiful spots in Kent.

The Salutation, a stunning Lutyens-designed manor house, has stood at the heart of Sandwich for over a century. The gardens were always a large part of its appeal – inspired by his good friend Gertrude Jekyll they offered a sense of

tranquility and peace for the homeowners and their guests.

Unfortunately, when Dominic and Stephanie Parker took over the house in 2004, the gardens had fallen into disrepair and were suffering greatly from 25 years of neglect.

It was immediately a priority for them to unearth the fallen beauty and, thanks to the help of their incredibly hard-working team, the gardens were re-opened by Monty Don in 2007.





Fate does have a sense of humour, though, and the terrible floods of winter 2013 seemed like a desperately unfair way to test the mettle of the Head Gardener, Steve Edney, and his team.

The damage was extraordinary. Waters rose to hip-deep throughout the gardens and many of the most beautiful spots were completely submerged.

A lot of rare plants were lost, two holly trees died and the gardening sheds were destroyed.

Even after 5 million litres of sea water were pumped back into the river, there were lingering obstacles to once again restoring the gardens. The quality of the soil had been greatly degraded, while thousands of worms had been killed.

But, thanks to bloody-minded determination and the valued help of generous locals giving their time to help with repairs, the gardens were largely repaired within a few months.





Now, they truly are something to behold.

The overall style and design is still greatly inspired by Jekyll. She liked gardens that surprised with unexpected views and treats around every corner. She designed gardens to have their own ‘room’s, each with its own character.

These preferences can easily be seen in The Salutation Gardens but, while

faithfulness to Jekyll’s genius has been important to the team, they have not restricted themselves to what was possible in the early 20th century.

The sheltered Tropical Border is home to plants that wouldn’t have been able to survive the colder climate in 1911. Among other rare beauties there grows a Wollemi Pine – an incredibly rare plant dating back to the Jurassic period.







Plus, there's Lake Patricia which was added in the 1970s. It features an island accessible by a small bridge - a glorious spot to sit and soak in the surroundings.

The gardens are back to their best this summer and are sure to be a great attraction to visitors. Audio tours of

between 1.5-2 hours explain the history of the gardens and the variety of rare plants on show, or guests can simply walk around the gardens unguided and at their own pace.

For opening times and pricing see [www.the-secretgardens.co.uk/visit-us/](http://www.the-secretgardens.co.uk/visit-us/)



## AJ Elson Tiling

Specialist Wall & Floor Tiling  
Ceramic, Natural Stone & Mosaic

25 years of experience

01227 360646  
07733 077047

## SOUTHGATE ELECTRICAL CO. LTD

*The Best Electrical Services*

*Offering a full range of electrical services  
from design to installation*

- External Electrics
- New Builds
- Access and Security
- Space Heating
- Electric Showers
- Fire Alarms
- Landlord Certificates



T: 01227 712790 / 07889 895394

[www.electricians-canterbury.com](http://www.electricians-canterbury.com)



# PJA

**Peter Jackson Architects**



Designing  
spaces  
for you



Harbour Offices, Whitstable, CT5 1AB  
01227 770470  
[www.peterjacksonarchitects.co.uk](http://www.peterjacksonarchitects.co.uk)

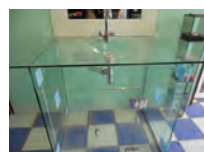
# CP Glass

& Window Repair Centre

Customise . . .

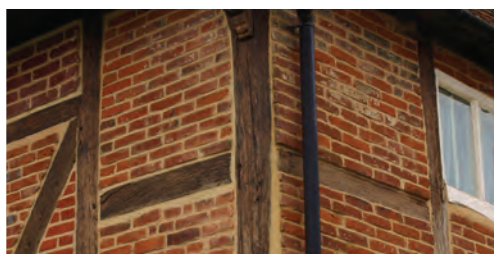
Tailormade . . .

Bespoke . .



Unit 8, St Georges Business Centre  
Brunswick Road, Ashford,  
Kent TN23 1ED  
01233 626045

- floor tiles
- wall tiles
- glass doors
- unit tops
- shower screens
- splash backs
- name plaques



Unit 9, Barton Business Park  
CT1 3AA

by appointment only

07977 027556

[restorationlime@gmail.com](mailto:restorationlime@gmail.com)

[www.restorationlime.co.uk](http://www.restorationlime.co.uk)

- ★ Period property specialist contractors
- ★ Lime mortar manufacture & sales
- ★ We stock a wide range of natural Hydraulic Limes and pre-mixed mortars
- ★ STEICO Breathable insulation, stockists and installers
- ★ Lime mortar pointing
- ★ Mortar matching service
- ★ Brick matching and replacement
- ★ Brick tinting
- ★ Structural crack repairs
- ★ Period property damp problems Solved with traditional methods
- ★ Free property survey

Interested in working in  
this field?

Please email your **CV**

If you have a  
period property  
please view our website

# Signature

## Miramar Care Home

*Summer is here; why not relax, enjoy wonderful sea views and spectacular sunsets at the **Miramar Care Home**...*



With its tranquil surroundings and beautiful sea view location, you can be assured of a relaxing stay and real friendship. Whether you are looking for completely independent, assisted living or nursing arrangements, we have all the facilities and luxuries to cater for your every need. No maintenance worries and we take care of all laundry and housekeeping.

We have studio and one or two bedroom apartments, for singles or

couples, each having its own lounge, wet room and fitted kitchen area, all tastefully decorated throughout.

Our care plans are as unique as you are, as we believe in creating a bespoke care package tailored to your precise needs. Whether you choose our Independent, Assisted Living or Nursing accommodation you can rest assured that here you will receive the highest standard of facilities and care - respecting your privacy with the added





peace of mind that there is always someone on hand 24 hours a day.

We also offer Respite care; should you be recovering from an operation or simply need care whilst your usual carer is away we will provide care and support within our superior environment.

Join in our varied entertainment 7 days a week or just relax in our homely lounges. With everything you need, including hair salon & beauty treatment room. Our restaurant offers waiter service, and all our delicious meals are prepared daily with a choice of dishes to suit every taste. Our bistro facility provides complimentary beverages,

cakes and fresh fruit throughout the day.

Remember, moving to the Miramar is not about moving to a care home, it's simply moving home, allowing you the freedom and flexibility to live your life the way you want within a spacious, purpose built, comfortable environment that offers companionship and care but also privacy when you want it.

To arrange an informal chat and a guided tour of our facilities, please call Kate Simmonds or Chris Trapp on 01227 671102 who will be happy to guide you every step of the way.

Visit [www.signature-care-homes.co.uk](http://www.signature-care-homes.co.uk) for our news and events







THE *New*  
BENCHMARK IN  
**care**

**MIRAMAR - HERNE BAY**  
**Care and Nursing Home**

**Stunning sea views** in a  
wonderful coastal location

**We now have apartments available  
for couples and companions.**

If you are looking to downsize and have no worries about maintenance and bills the Miramar would be an ideal move. We have spacious private apartments all en-suite with care and support available 24 hours a day. Enjoy freshly cooked meals three times a day, wonderful activities and trips out. The Miramar is set in beautiful gardens with wonderful sea views.

To find out more and take a tour,  
call Chris or Kate on **01227 671102**

Make our home **your new home**

[www.signature-care-homes.co.uk](http://www.signature-care-homes.co.uk)

**Signature**  
setting the standard for senior care

*your invitation*





# HB HOWARDS BLINDS & CURTAINS LTD

Telephone: 01227 772779

Fax: 01227 265202

Mobile: 07860 391136

Howards House, Joseph Wilson Industrial Estate, Millstrood Road, Whitstable, Kent



## We offer a complete one to one service all year round

Established since 1980 and enjoying its' 35th year of business within the county of Kent. Our company manufactures and supplies an extensive range of blinds and curtain suitable for both your home and office. Working to the very highest professional standards, using only the highest quality fabrics and materials. All comply to BS5750 and are guaranteed for five years.



- | Venetian & Roller Blinds | Vertical Blinds
- | Curtains, Plain & Print | Curtain Rails & Poles
- | Canopies & Awnings | Conservatory Blinds
- | Free Estimation & Fitting Service

[sales@howardsblinds.com](mailto:sales@howardsblinds.com) | [www.howardsblinds.com](http://www.howardsblinds.com)



Set in mature gardens with views to all sides across open countryside as well as towards the nearby village of Chilham, this five bedroom house is less than a mile from a mainline station with the option of additional land available.

A walled, formal garden to the front give an imposing first impression, which is somewhat of a contrast to the cosy, farmhouse feel of the interior.

Nonetheless, this is a large property

of over 4,300 sq ft, with numerous reception rooms and spacious living accommodation which forms a near-perfect check list for a family house

A large kitchen, complete with Aga, forms a focal part of the house which opens onto a huge, flagstone terrace and adjoins a beautiful garden room. With not just one, but two utility rooms, there's plenty of room for wet dogs, laundry and muddy boots.





There's a formal dining room, family sitting room and drawing room, all abundant with character features including inglenook fireplaces and exposed timbers

Sent from Windows Mail

A cellar with two rooms provides excellent wine storage with space left over, but could be ideal for further conversion subject to the relevant consents. To the first floor there are five double bedrooms, two with en-suite bathrooms and all are bright

with countryside views. A separate family bathroom serves the remaining bedrooms.

The lawned gardens that envelope the house include a mixture of mature shrubs and trees with focal areas for alfresco dining and an ornamental pond. Nestled in one secluded area there is an outbuilding that has previously been used for chickens and small livestock. Close by access could be made available to a parcel of land subject to separate negotiation. The additional land can be



up to 20 acres or as little as 1 acre.

The medieval and nearby village of Chilham is just a short walk or drive from the house with a central square, castle and church, sometimes used for filming of period dramas, it is a picture-postcard location and has two pubs, a hotel, doctors' surgery, primary school and farm shop. The area is criss-crossed with foot paths and bridleways including the Pilgrims Way.

The mainline station of Chilham has

regular services between Canterbury and Ashford International, with links to high-speed services to London, connecting you to the capital in just over an hour. The A28 provides easy access to both the A2/M2 and M20 corridors for both the channel ports and other routes in the UK.

For more information please call Winkworth Estate Agency on 01227 4566451 or visit their website at [www.winkworth.co.uk](http://www.winkworth.co.uk)



**Property** - Soles Hill Farm

**Address** - Chilham, Canterbury, Kent CT4 8JZ

**Bedrooms** - Five

**Bathrooms** - Three (two En-Suites)

**Price** - £1,300,000



**KBS**  
**KENT BLAST SERVICE**  
*Mobile blast cleaning service*

**Dry Blasting of**

- Light aluminium to heavy steel
- Brickwork
- Frames
- Cast Iron
- Fireplaces
- Garden Furniture
- Stone
- Baskets and backs
- Beams
- Doors and Cills

Contact Nigel Evans on 07716 228747  
 info@kentblastservice.co.uk  
 www.kentblastservice.co.uk

**A LADY WHO DOES**

Do you need help with any of these??



- ◆ Support with Independent Living
- ◆ Personal Hygiene Care
- ◆ Domestic Assistance
- ◆ Cooking
- ◆ Cleaning
- ◆ Shopping
- ◆ Social Visits
- ◆ Transport
- ◆ Days Out
- ◆ Dog Walking

Very competitive hourly rate

For further information please contact me on:  
**07919 286747**

**BALLMAN**  
 ROOFING CONTRACTORS  
 WWW.KENTROOF.COM  
*Taking roofing to another level*

Call **Andy Ballman**  
**0800 118 22 68**

- Conservation/Leadwork Specialist
- Tiling/Slating • Fascias and Guttering
- Flat Roofs - Felt and Fibreglass

Office: 01227 741094 Mobile: 07920 875998  
 Email: andy@kentroof.com www.kentroof.com

**Cleal's**  
 Upholstery  
**Now with over 45 years experience**



**Why replace your furniture when I can:**  
 Repair and recover your dining chairs  
 Carry out any re-upholstery and recovering in a wide range of fabrics  
 Renew old cushion - Replace rubber webbing - Renew old springs  
 Cane and rush seating - Caravan and boat cushions

- Domestic
- Contract
- Antique
- Modern



21 Oakwood Drive, Whitstable  
 Kent CT5 1NY  
 Tel/Fax: 01227 273811  
 Email: clealsupholstery@hotmail.co.uk

# BJ Cesspool Services

If you want someone who is reliable, careful and efficient to empty your cesspool, septic tank or or treatment plant please call me, Barry Spicer.







Please leave a message if I am unable to answer the telephone and I will get back to you as soon as possible.

We can help you with your home, rental properties, caravan parks, hotels and in fact any property that is not on main drains. A jetting service can also be provided.



**07796 282864 / 01233 624017**  
 (day or night)

We've arranged a  
bunch of reasons to choose  
a beautiful worktop  
from us ...x

-  Bespoke worktops  
that fit on top
-  Fitted in one day, with  
no mess or demolition
-  Over 50 colours to  
choose from
-  Installed by our own  
professional fitters
-  Friendly advice & free  
home consultation
-  We also fit new  
kitchen doors!



Visit our showroom, or call to book a free home consultation, and we'll show you how easy it is to transform your kitchen with our granite, quartz or recycled glass worktops.

**Call now 01622 297371**

At **Granite Transformations** we offer a complete package for updating your work surfaces, doors and appliances. Fitting a new worktop is fast and effective with each top custom made to your exact requirements. There is **no need to remove old worktops**, we simply fit directly over your existing surfaces, guaranteeing complete peace of mind from start to finish. To complete the look, we also supply and install **made-to-measure** kitchen cabinet doors and drawer fronts, in a wide choice of colours, finishes and styles.

**Maidstone Showroom:**

Newnham Court Shopping Village, Bearsted Road, Maidstone, Kent ME14 5LH

Open 10.30am – 4.30pm Mon to Fri, 10am – 5pm Sat & Sun

[www.granitetransformations.co.uk/maidstone](http://www.granitetransformations.co.uk/maidstone)





# GTP HOME IMPROVEMENTS LTD



Conservatories

- PVCu, Aluminium & Hardwood
- Top Quality • Part L Compliant
- 'A' Rated Kommerling PVCu Windows
- Local Family Run Business
- 27 Years Experience



Composite Doors



Bi-folding Doors

- ★ FREE DESIGN, SURVEY & QUOTATION
- ★ NO SALESMAN - NO COMMISSION
- ★ 10 YR INSURANCE BACKED GUARANTEE
- ★ BASE WORK, ELECTRICS, PLUMBING & HEATING

**01233 645712**  
**[www.gtpwindows.co.uk](http://www.gtpwindows.co.uk)**

